

TECHNICAL MANUAL

**ORGANIZATIONAL, DIRECT SUPPORT, AND GENERAL SUPPORT MAINTENANCE
REPAIR PARTS AND SPECIAL TOOLS LISTS
(INCLUDING DEPOT MAINTENANCE REPAIR PARTS AND SPECIAL TOOLS)
FOR
DEHUMIDIFIER, DESICCANT ELECTRIC HD-501/MRC-85
(McGRAW EDISON CO. KS-16153)**

TECHNICAL MANUAL }
NO. 11-5820-760-24P }

HEADQUARTERS
DEPARTMENT OF THE ARMY
WASHINGTON, DC, 16 June 1976

**Organizational, Direct Support, and General Support
Maintenance Repair Parts and Special Tools Lists
(Including Depot Maintenance Repair Parts and Special Tools)**

for

**DEHUMIDIFIER, DESICCANT ELECTRIC HD-501/MRC-85
(McGRAW EDISON CO. KS-16153)**

Current as of 1 January 1976

REPORTING OF ERRORS

You can improve this manual by recommending improvements using DA Form 2028-2 (Test) located in the back of the manual. Simply tear out the self-addressed form, fill it out as shown on the sample, fold it where shown, and drop it in the mail.

If there are no blank DA Forms 2028-2 (Test) in the back of your manual, use the standard DA Form 2028 (Recommended Changes to Publications and Blank Forms) and forward to the Commander, US Army Electronics Command, ATTN: DRSEL-MA-Q, Fort Monmouth, NJ 07703.

In either case a reply will be furnished direct to you.

Table of Contents

	Page	Illus Figure
Section I. Introduction	1	
Section II. Repair parts list	5	
Group 00 Dehumidifier, Desiccant Electric HD-501/MRC-85 (KS-16153)	5	1
01 Control box	9	2
0101 Control, humidity	11	3
02 Piping assembly	13	4
Section III. Special tools list (Not applicable)		
Section IV. National stock number and part number index	14	

***This manual supersedes so much of TM 11-5820-760-15, 19 March 1970, including all changes, as pertains to repair parts and special tools list.**

SECTION I

INTRODUCTION

1. Scope

This manual lists repair parts special tools; and other support equipment required for performance of organizational, direct support, and general support maintenance of the Dehumidifier, Desiccant Electric HD-501/MRC-85.

2. General

This Repair Parts and Special Tools List is divided into the following sections:

a. **Section II. Repair Parts List.** A list of repair parts authorized for use in performance of maintenance. The list also includes parts which must be removed for replacement of the authorized parts. Parts lists are composed of functional groups in ascending numerical sequence, with the parts in each group listed in figure and item number sequence.

b. **Section III. Special Tools List.** Not applicable.

c. **Section IV. National Stock Number and Part Number Index.** A list, in ascending National item identification number (NIIN, last 9 digits) sequence, of all National stock numbers appearing in the listings, followed by a list, in alphameric sequence, of all part numbers appearing in the listings. National stock number and part numbers are cross-referenced to each illustration figure and item number appearance.

3. Explanation of Columns

The following provides an explanation of columns found in the tabular listings:

a. Illustration. This column is divided as follows:

(1) **Figure number.** Indicates the figure number of the illustration in which the item is shown.

(2) **Item number.** The number used to identify each item called out in the illustration.

b. **Source, Maintenance, and Recoverability Codes (SMR).**

(1) **Source code.** Source codes are assigned to support items to indicate the manner of acquiring support items for maintenance, repair, or overhaul of end items. Source codes are entered in the first and second positions of the uniform SMR Code format as follows:

Code	Definition
PA-Item	procured and stocked for anticipated or known usage.
XD-A	support item that is not stocked. When required, item will be procured through normal supply channels.

NOTE

Cannibalization or salvage may be used as a source of supply for any items source coded above except those coded XA, XD, and aircraft support items as restricted by **AR 700-42**.

(2) **Maintenance code.** Maintenance codes are assigned to indicate the levels of maintenance authorized to USE and REPAIR support items. The maintenance codes are entered in the third and fourth positions of the Uniform SMR Code format as follows:

(a) The maintenance code entered in the third position will indicate the lowest maintenance level authorized to remove, replace, and use the support item. The maintenance code entered in the third position will indicate one of the following levels of maintenance:

Code	Application/Explanation
O	-Support item is removed, replaced, used at the organizational level.
F	-Support item is removed, replaced, used at the direct support level.

(b) The maintenance code entered in the fourth position indicates whether the item is to be repaired and identifies the lowest maintenance level with the capability to perform complete repair (i.e., all authorized maintenance functions). This position will contain one of the following maintenance codes:

Code	Application/Explanation
H	-The lowest maintenance level capable of complete repair of the support item is the general support level.
Z	--Nonreparable. No repair is authorized.

(3) **Recoverability code.** Recoverability codes are assigned to support items to indicate the disposition action on unserviceable items. The recoverability code is entered in the fifth

position of the Uniform SMR Code format as follows:

Recoverability codes

Definition

- Z-Nonreparable item. When unserviceable, condemn and dispose at the level indicated in position 3.
- H-Reparable item. When uneconomically reparable, condemn and dispose at the general support level.

c. National **Stock Number**. Indicates the National stock number assigned to the item and will be used for requisitioning purposes.

d. **Part Number**. Indicates the primary number used by the manufacturer (individual, company, firm, corporation, or Government activity), which controls the design and characteristics of the item by means of its engineering drawings, specifications standards, and inspection requirements, to identify an item or range of items.

NOTE

When a stock numbered item is requisitioned, the repair part received may have a different part number than the part being replaced.

e. **Federal Supply Code for Manufacturer (FSCM)**. The FSCM is a 5-digit numeric code listed in SB 708-42 which is used to identify the manufacturer, distributor, or Government agency, etc.

f. **Description**. Indicates the Federal item name and, if required, a minimum description to identify the item.

g. **Unit of Measure (U/M)**. Indicates the standard of the basic quantity of the listed item as used in performing the actual maintenance function. This measure is expressed by a two-character alphabetical abbreviation (e.g., ea, in, pr, etc.). When the unit of measure differs from the unit of issue, the lowest unit of issue that will satisfy the required units of measure will be requisitioned.

h. **Quantity Incorporated in Unit**. Indicates

the quantity of the item used in the breakout shown on the illustration figure, which is prepared for a functional group, subfunctional group, or an assembly. A 'V' appearing in this column in lieu of a quantity indicates that no specific quantity is applicable (e.g., shims, spacem, etc.).

4. Special Information

The following publication pertains to HD-501/MRC-85 and its components: TM 11-5820-760-15, Dehumidifier, Desiccant Electric HD-501/MRC-85.

5. How to Locate Repair Parts

a. When National stock number or part number is unknown:

(1) **First**. Using the table of contents, determine the functional group within which the repair part belongs. This is necessary since illustrations are prepared for functional groups, and listings are divided into the same groups.

(2) **Second**. Find the illustration covering the functional group to which the repair part belongs.

(3) **Third**. Identify the repair part on the illustration and note the illustration figure and item number of the repair part.

(4) **Fourth**. Using the Repair Parts Listing, find the figure and item number noted on the illustration.

b. When National stock number or part number is known:

(1) **First**. Using the Index of National Stock Numbers and Part Numbers, find the pertinent National stock number or part number. This index is in ascending NIIN sequence followed by a list of part numbers in ascending alphameric sequence, cross-referenced to the illustration figure number and item number.

(2) **Second**. After finding the figure and item number, locate the figure and item number in the repair parts list.

6. Abbreviations

Not applicable.

(Next printed page is 3)

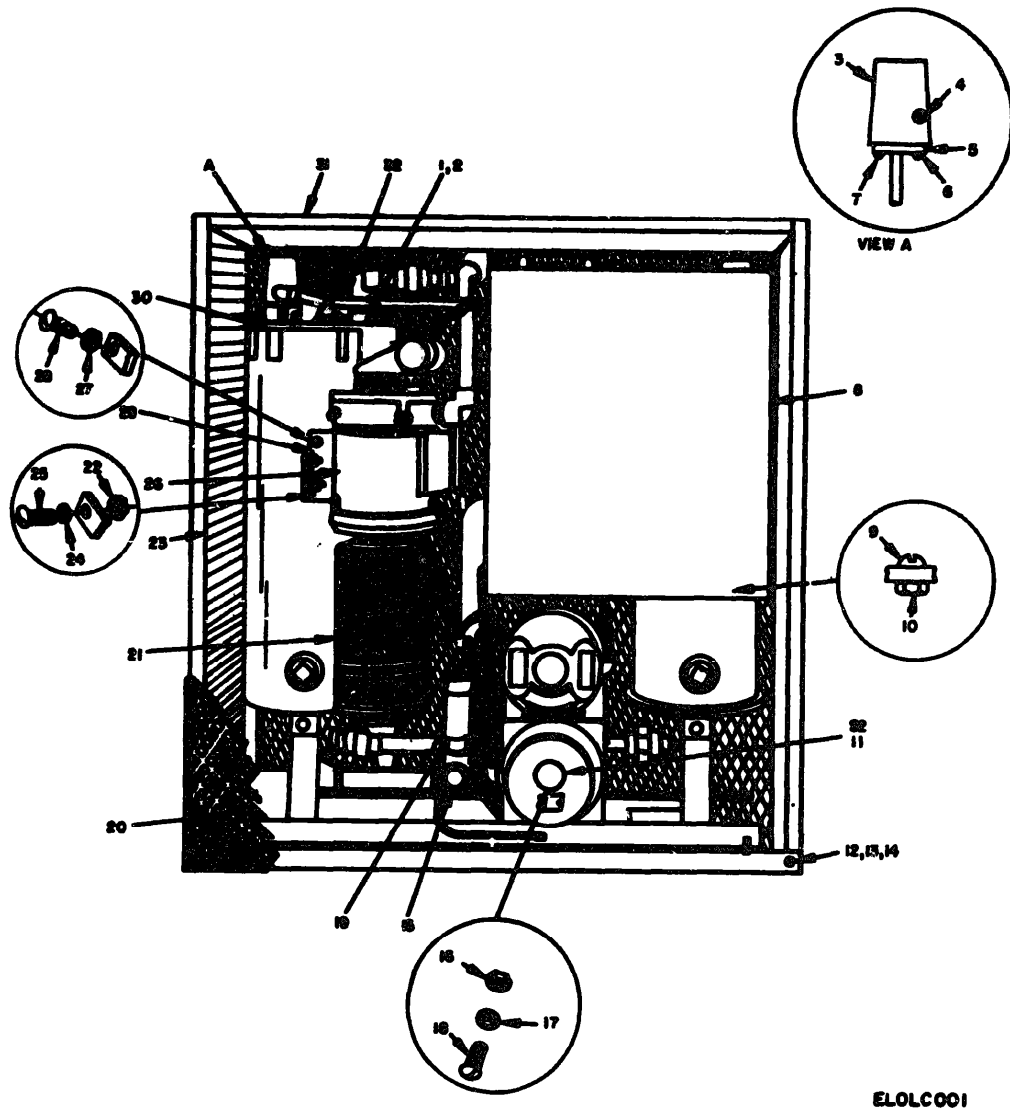


Figure 1. Dehumidifier, Desiccant Electric HD-501/MRC-85 (Sheet 1 of 2).

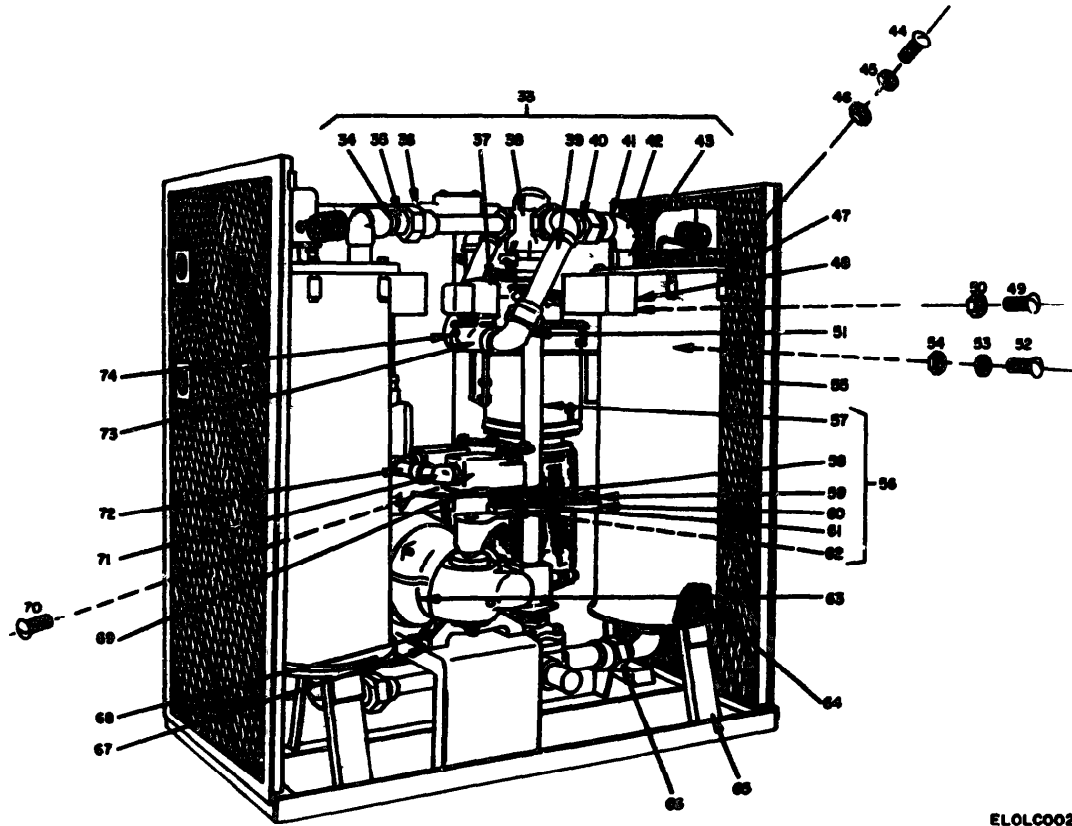


Figure 1. Dehumidifier, Desiccant Electric HD-501/MRC-85 (Sheet 2 of 2).

SECTION II

TM 11-5820-760-24P

(3)

NATIONAL STOCK NUMBER

ILLUSTRATION			(4)	(5)	(6)	(7)	(8)
(a) FIG NO	(b) ITEM NO.	BAR CODE	PART NUMBER	FIGM	DESCRIPTION	U/M	QTY INC IN UNIT
					USABLE ON CODE		
GROUP 00 DEHUMIDIFIER, DESICCANT ELECTRIC							
HD-901/MR.-85(KS-16153)							
1	1	XDFZZ	F1322	05241	RUSHING, CAPILLARY	EA	2
1	2	XDFZZ	02212	05241	WELL, THERMOSTATIC	EA	2
1	3	XDFZZ	A1613-4-42	05241	SWITCH, THERMOSTATIC	EA	2
1	4	XDFZZ	A1613-4-43	05241	SCREW, MACHINE	EA	4
1	5	XDFZZ	02147	05241	BRACKET, MOUNTING, THRMSTC SW	EA	2
1	6	XDFZZ	A1613-4-30	05241	WASHER, FLAT	EA	4
1	7	XDFZZ	A1613-4-29	05241	SCREW, MACHINE	EA	4
1	8	XDFHM	69832	05241	CONTROL BOX	EA	1
1	9	XDFZZ	A1613-4-38	05241	WASHER, LOCK	EA	4
1	10	XDFZZ	A1613-4-37	05241	NUT, PLAIN, HEXAGON	EA	4
1	11	XDFZZ	K55793L3	64959	SWITCH, PRESSURE	EA	1
1	12	XDFZZ	A1613-4-63	05241	SCREW, MACHINE	EA	8
1	13	XDFZZ	A1613-4-22	05241	NUT, PLAIN, HEXAGON	EA	14
1	14	XDFZZ	A1613-4-20	05241	WASHER, LOCK, SPRING	EA	14
1	15	XDFZZ	02573	05241	ORIFICE ASSY REACTVTD AIR OUT	EA	1
1	16	XDFZZ	A1613-4-73	05241	NUT, PLAIN, HEXAGON	EA	3
1	17	XDFZZ	A1613-4-72	05241	WASHER, LOCK, SPRING	EA	3
1	18	XDFZZ	A1613-4-71	05241	SCREW, MACHINE	EA	3
1	19	PAFZZ	6685-00-967-3428 15-1207	02356	SENSING ELEMENT	EA	1
1	20	XDFZZ	C2149	05241	GUARD, SCREEN, FRONT	EA	1
1	21	XDFZZ	P60211-3	64959	FILTER, AIR CONDITIONING	EA	1
1	22	XDFZZ	A1613-4-51	05241	NUT, PLAIN, HEXAGON	EA	6
1	23	XDFZZ	C2157	05241	GUARD, SCREEN, SIDE	EA	2
1	24	XDFZZ	A1613-4-50	05241	WASHER, LOCK, SPRING	EA	6
1	25	XDFZZ	A1613-4-49	05241	BOLT, MACHINE, HEXAGON HEAD	EA	6
1	26	XDFZZ	K516467L1	64959	BLOWER, AIR	EA	1
1	27	XDFZZ	A1613-4-50-1	05241	WASHER, LOCK	EA	2
1	28	XDFZZ	A1613-4-49-1	05241	BOLT, MACHINE, HEXAGON HEAD	EA	2
1	29	XDFZZ	02145	05241	BRACKET, MOUNTING AIR BLOWER	EA	1
1	30	XDFZZ	C2183	05241	HEAD ASSEMBLY, TOP	EA	2
1	31	XDFZZ	C2159	05241	GUARD, SCREEN, TOP	EA	1
1	32	XDFZZ	C2153	05241	GUARD, SCREEN, BACK	EA	1
1	33	XDFZZ	02556	05241	PIPING ASSEMBLY, TOP	EA	1
1	34	XDFZZ	02556-14	05241	RUSHING, PIPE, HEXAGON	EA	2
1	35	XDFZZ	02556-4	05241	NIPPLE, PIPE	EA	2
1	36	XDFZZ	02556-1	05241	UNION, PIPE	EA	1
1	37	XDFZZ	LP8030A2	04845	VALVE, SOLENOID	EA	1
1	38	XDFZZ	12556-2	05241	VALVE, PLUG	EA	1

SECTION II

TM 11-5820-760-24P

(1) ILLUSTRATION		(2)	(3)	(4)	(5)	(6)	(7)	(8)
(a) FIG NO.	(b) ITEM NO.	SNR CODE	NATIONAL STOCK NUMBER	PART NUMBER	FCMN	DESCRIPTION	USABLE ON CODE	QTY INC IN UNIT
1	39	XDFZZ		B2556-10	05241	NIPPLE, PIPE	EA	1
1	40	XDFZZ		B2556-8	05241	NIPPLE, PIPE	EA	4
1	41	XDFZZ		B2556-9	05241	NIPPLE, PIPE	EA	2
1	42	XDFZZ		B2556-11	05241	ELBOW, UNION	EA	2
1	43	XDFZZ		D2141	05241	NOZZLE ASSY, ADSORBER INPUT	EA	4
1	44	XDFZZ		A1613-4-12	05241	BOLT, MACHINE, HEXAGON HEAD	EA	12
1	45	XDFZZ		A1613-4-13	05241	WASHER, LOCK, EXTERNAL TOOTH	EA	12
1	46	XDFZZ		A1613-4-14	05241	NUT, PLAIN, HEXAGON	EA	12
1	47	XDFZZ		A1613-4-11	05241	GASKET, HEAD, CRANITE	EA	2
1	48	XDFZZ		D2015	05241	HEATER TERMINAL ASSEMBLY	EA	2
1	49	XDFZZ		A1613-4-32	05241	SCREW, MACHINE	EA	4
1	50	XDFZZ		A1613-4-33	05241	NUT, PLAIN, HEXAGON	EA	4
1	51	XDFZZ		B2556-3	05241	ELBOW, PIPE	EA	2
1	52	XDFZZ		A1613-4-3	05241	BOLT, MACHINE, HEXAGON HEAD	EA	4
1	53	XDFZZ		A1613-4-4	05241	WASHER, LOCK, SPRING	EA	4
1	54	XDFZZ		A1613-4-5	05241	NUT, PLAIN, HEXAGON	EA	4
1	55	XDFZZ		B2550	05241	CYLINDER ASSEMBLY, ADSORBER	EA	2
1	56	XDFZZ		B2551	05241	V OPERATING SET AND LGKE ASSY	EA	1
1	57	XDFZZ		B2551-1-2-3-5	05241	SHAFT, VALVE OPERATING	EA	1
1	58	XDFZZ		D2128-2	05241	PIN, GROOVED, HEADLESS	EA	1
1	59	XDFZZ		D2127-2	05241	ARM, CONNECTING	EA	1
1	60	XDFZZ		D2128-3	05241	ARM, CRANK, MOTOR	EA	1
1	61	XDFZZ		5100-62	79136	RING, RETAINING, EXTERNAL	EA	3
1	62	XDFZZ		B2551-14	05241	SETScrew	EA	1
1	63	XDFZZ		B2209-2	05241	SPARK MOTOR, VALVE DRIVE	EA	1
1	64	PAFZZ	5340-00-896-0680	B2563	05241	HEATING ELEMENT ELECTRICAL	EA	2
1	65	XDFZZ		C2141	05241	SKID AND BASE ASSEMBLY	EA	1
1	66	XDFPM		C2197	05241	PIPING ASSEMBLY, BOTTOM	EA	1
1	67	XDFZZ		E1492	05241	SHIM	EA	2
1	68	XDFZZ		A1613-4-19	05241	BOLT, MACHINE, HEXAGON HEAD	EA	6
1	69	XDFZZ		A1613-4-40	05241	SWITCH, LIMIT	EA	2
1	70	XDFZZ		A1613-4-41	05241	SCREW, MACHINE	EA	6
1	71	XDFZZ		E119	05241	ELBOW, ELECTRICAL CONDUIT	EA	1
1	72	XDFZZ		C2210-12	05241	NIPPLE, ELECTRICAL CONDUIT	EA	2
1	73	XDFZZ		B2556-5	05241	TEE, PIPE, SERVICE	EA	1
1	74	XDFZZ		E1337	05241	EXTENSION, LUBRICANT ELBOW	EA	1

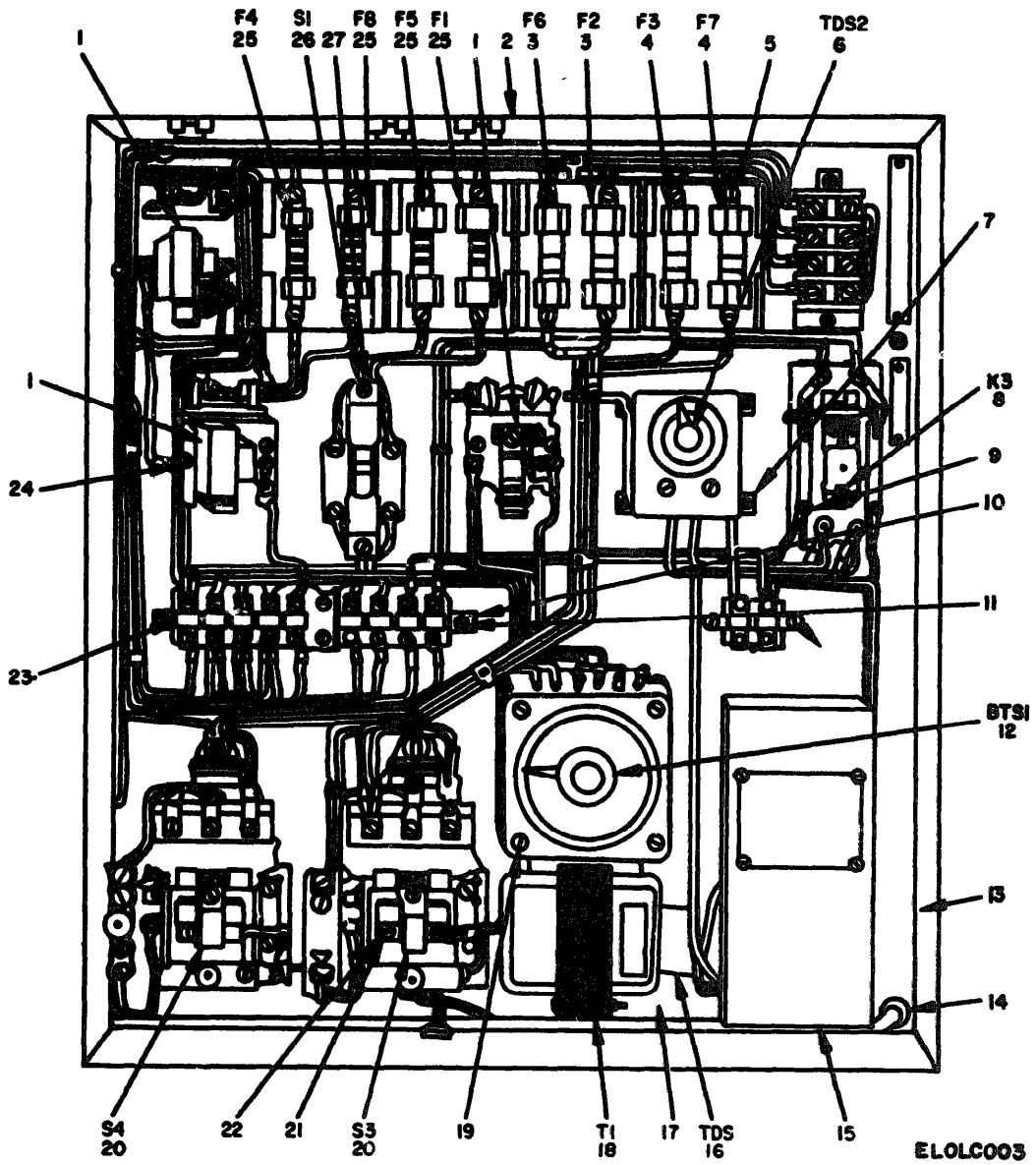
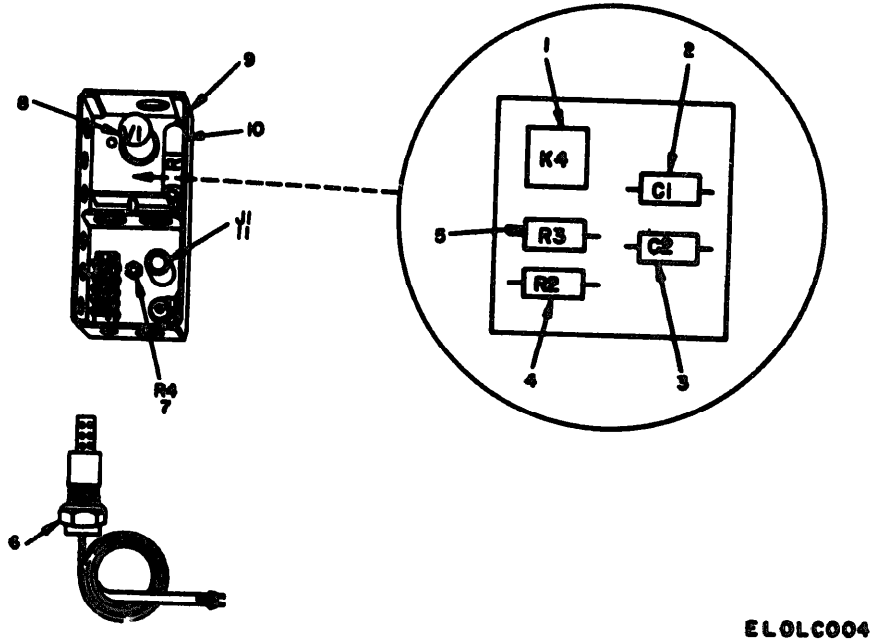


Figure 2. Control Box.

(1) ILLUSTRATION		(2)	(3)	(4)	(5)	(6)	(7)	(8)
(a) FIG NO.	(b) ITEM NO.	SMR CODE	NATIONAL STOCK NUMBER	PART NUMBER	PSCM	DESCRIPTION	USABLE ON CODE	QTY INC IN UNIT
GROUP 01 CONTROL BOX								
2	1	XDFZZ		B2593-10	05241	RELAY, SOLENOID		EA 3
2	2	XDFHH		69830	05241	CONTROL BOX ASSEMBLY		EA 1
2	3	PAQZZ	5920-00-235-8359	FRN1	71400	FUSE, CARTRIDGE		EA 2
2	4	PAQZZ	5920-00-501-3965	FRN2 1-2	71400	FUSE, CARTRIDGE		EA 2
2	5	XDFZZ		72965-1	04009	FUSEHOLDER		EA 4
2	6	XDFZZ		B2288-10	05241	RELAY, TIME DELAY		EA 1
2	7	XDFZZ		B4044-17	05241	SCREW, MACHINE		FA 4
2	8	XDFZZ		B2288-4	05241	RELAY, SEQUENCE		EA 1
2	9	XDFZZ		B4044-18	05241	SCREW, MACHINE		EA 3
2	10	XDFZZ		B4044-19	05241	WASHER, LOCK		FA 12
2	11	XDFZZ		B4044-16	05241	SCREW, MACHINE		EA 8
2	12	PAFZZ	6645-00-883-4097	HP4886	19006	TIMER		EA 1
2	13	XDFZZ		C2182	05241	BOX, CONTROL		EA 1
2	14	XDFZZ		X2602	76385	GROMMET, RUBBER		EA 2
2	15	XDFHH		15-3201	02356	CONTROL, HUMIDITY		EA 1
2	16	XDFZZ		TDS1	05241	SWITCH, TIME DELAY		EA 1
2	17	XDFZZ		C2168	05241	PLATE, MOUNTING		EA 1
2	18	XDFZZ		B2593-12	05241	TRANSFORMER, POWER, STEP DOWN		EA 1
2	19	XDFZZ		B4044-13	05241	SCREW, MACHINE		EA 8
2	20	XDFZZ		B2288-6	05241	STARTER, MOTOR, OPEN TYPE		EA 2
2	21	XDFZZ		B4044-14	05241	SCREW, MACHINE		EA 6
2	22	XDFZZ		R4044-20	05241	WASHER, FLAT		EA 6
2	23	XDFZZ		R92-15T	01121	TERMINAL BLOCK		FA 15
2	24	XDFZZ		R4044-14	05241	SCREW, MACHINE		EA 24
2	25	PAQZZ		N0N6	71400	FUSE, CARTRIDGE		EA 4
2	26	XDFZZ		RB22289	60969	SWITCH, TOGGLE, SPST		EA 1
2	27	XDFZZ		R4044-15	05241	SCREW, MACHINE		FA 2



EL0LC004

Figure 3. Control Humidity.

SECTION II

TM 11-5820-760-24P

(1) ABSTRACTION NO.		(2) ITEM NO.	(3) ORR CODE	(4) NATIONAL STOCK NUMBER	(5) PART NUMBER	(6) FROM	(8) DESCRIPTION	(7) USABLE ON CODE	(9) U/M	(10) QTY INC IN UNIT
3	1	PAFZZ		5945-00-063-7272	AN1-322NAR	74193	RELAY, TIME DELAY		FA	1
3	2	XDFEZ			0.05UF	05241	CAPACITOR, FIXED		EA	1
3	3	XDFEZ			8UF 250VDCW	05241	CAPACITOR, FIXED		EA	1
3	4	XDFEZ			10,000 ohms 1-2 W	05241	RESISTOR, FIXED, COMPOSITION		EA	1
3	5	XDFEZ			27,000 ohms 1-2 W	05241	RESISTOR, FIXED, COMPOSITION		FA	1
3	6	XDFZZ			15-6141	02356	THREADFD MOUNTING AND CABLE		EA	1
3	7	XDFZZ			5 MEGOHM 1-2 WATT	05241	RESISTOR, VARIABLE		EA	1
3	8	PAFZZ		5960-00-100-7303	50L6G7	81349	ELECTRON TUBE		FA	1
3	9	XDFHW			15-3201	02356	CONTROL, HUMIDITY		EA	1
3	10	XDFEZ			15-9110	02356	RESISTOR, FIXED, WIREWOUND		EA	1
3	11	XDFZZ			15-6220	02356	SET PLUG		EA	1

GROUP 0101 - CONTROL, HUMIDITY

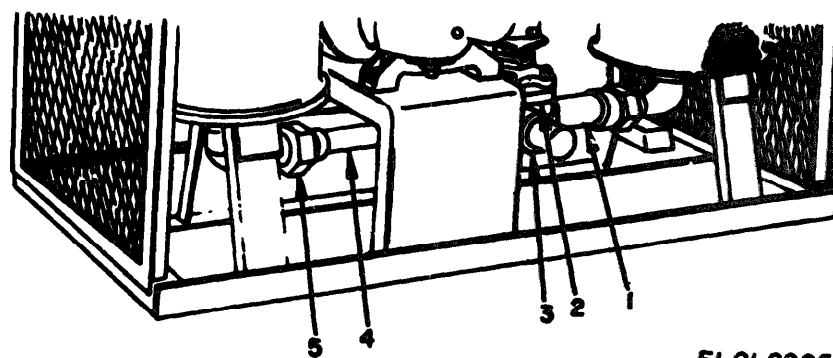


Figure 4. Piping Assembly.

ELOLC005

SECTION II

TM 11-5820-760-24P

(1) ILLUSTRATION		(2) QMR CODE	(3) NATIONAL STOCK NUMBER	(4) PART NUMBER	(5) FIG. #	(6) DESCRIPTION	(7) USABLE QMR CODE	(8) QTY	(9) UNIT
(10) FIG. NO.	(11) ITEM NO.								

GROUP 02 PIPING ASSEMBLY

4	1	XDP22	C2197-7	05241		NEPPL, PIPE	EA	0
4	2	XDP22	B2256-2	05241		VALVE, PLUG	EA	1
4	3	XDP22	C2197-5	05241		NEPPL, PIPE	EA	1
4	4	XDP22	C2197-6	05241		NEPPL, PIPE	EA	1
4	5	XDP22	C2197-2	05241		UNION, PIPE	EA	2

NOTE: LATEST NATIONAL STOCK NUMBER AND PART NUMBER ASSIGNMENTS ARE INCLUDED AT END OF INDEX

STOCK NUMBER	FIGURE NO.	ITEM NO.	STOCK NUMBER	FIGURE NO.	ITEM NO.
5945-00-063-7272	3	1	6685-00-967-3428	1	19
5960-00-100-7305	3	8			

	FSCM	FIG. NO.	ITEM NO.	PART NUMBER	FSCM	FIG. NO.	ITEM NO.
	74193	3	1	B4044-16	05241	2	11
	05241	1	47	B4044-17	05241	2	7
	05241	1	44	B4044-18	05241	2	9
	05241	1	45	B4044-19	05241	2	10
	05241	1	46	B4044-20	05241	2	22
	05241	1	68	C2141	05241	1	65
	05241	1	14	C2149	05241	1	20
	05241	1	13	C2163	05241	1	32
	05241	1	7	C2157	05241	1	23
	05241	1	52	C2159	05241	1	31
	05241	1	6	C2168	05241	2	17
	05241	1	49	C2182	05241	2	13
	05241	1	50	C2183	05241	1	30
	05241	1	10	C2197	05241	1	66
	05241	1	9	C2197-2	05241	4	5
	05241	1	53	C2197-5	05241	4	3
	05241	1	69	C2197-6	05241	4	4
	05241	1	70	C2210-12	05241	4	1
	05241	1	3	D2015	05241	1	72
	05241	1	4	D2177-2	05241	1	48
	05241	1	25	D2178-2	05241	1	59
	05241	1	28	D2183-3	05241	1	58
	05241	1	54	D2191	05241	1	60
	05241	1	24	D2141	05241	1	43
	05241	1	27	D2145	05241	1	29
	05241	1	22	D2147	05241	1	5
	05241	1	12	D2212	05241	1	2
	05241	1	18	D2573	05241	1	15
	05241	1	17	E119	05241	1	71
	05241	1	16	E1322	05241	1	1
	05241	4	2	E1337	05241	1	74
	05241	2	6	E1452	05241	1	67
	05241	1	63	FRN1	71400	2	3
	05241	2	8	FRN2 1-2	71400	2	4
	05241	2	20	HP4886	19006	2	17
	05241	1	55	KS16467L1	64959	1	26
	05241	1	56	KS5793L3	64959	1	11
	05241	1	57	LP8030A2	04845	1	37
	05241	1	62	NON6	71400	2	25
	05241	1	33	P60211-3	64959	1	21
	05241	1	36	RB2289	60969	2	26
	05241	1	39	R2607	76385	2	14
	05241	1	42	00000	05241	3	2
	05241	1	34	00000	05241	3	3
	05241	1	38	00000	05241	3	4
	05241	1	51	00000	05241	3	5
	05241	1	35	15-1207	02356	1	19
	05241	1	73	15-3201	02356	2	15
	05241	1	40	15-3201	02356	3	9
	05241	1	41	15-6141	02356	3	6
	05241	1	64	15-6220	02356	3	11
	05241	2	1	15-9110	02356	3	10
	05241	2	18	50L6GT	81349	3	8
	05241	2	19	5100-62	79136	1	61
	05241	2	21	72965-1	04009	2	5
	05241	2	24	892-15T	01121	2	23
	05241	2	27				

LATEST NATIONAL STOCK NUMBER ASSIGNMENTS

STOCK NUMBER	FIGURE NO.	ITEM NO.
5920-00-199-9483	2	25
5920-00-235-8359	2	3
5920-00-501-3965	2	4
6645-00-883	2	12
5340-00-896-0680	1	64

LATEST PART NUMBER ASSIGNMENTS

PART NUMBER	FSCM	FIGURE NO.	ITEM NO.
TDS1	05241	2	16
0.05 UP	05241	3	2
10,000 OHMS 1-2W	05241	3	4
27,000 OHMS 1-2W	05241	3	5
5ME OHM 1-2 WATT	05241	3	7
69830	05241	2	2
69832	05241	1	8
8UF 250VDCW	05241	3	3

By Order of the Secretary of the Army:

FRED C. WEYAND
General, United States Army
Chief of Staff

Official:

PAUL T. SMITH
Major General, United States Army
The Adjutant General

Distribution:

Active Army:

USASA (2)
 OS Maj Comd (2)
 USACC (5)
 USACC-CONUS (3)
 USACC-EUR (3)
 USACC-T (10)
 USACC Sig Gp, Okinawa (3)
 USACC-Japan (5)
 USACC Comm Op Fac, Korea (3)
 USACC Sig Gp, Taiwan (2)
 USACC-PAC (3)
 USACC Sig Bde, Korea (3)
 LOGCOMDS (5)
 8th USA (5)
 Sig FLDMS (PAC) (EUR) (1)
 LBAD (5)
 SAAD (10)
 TOAD (10)
 USACSA (2)
 TECOM (2)
 HISA (Ft Monmouth) (33)

USA Ascom Depot (3)
 USA Cp Carroll Depot (2)
 Units org under fol TOE
 (2 cys each unit):
 11-15
 11-45
 11-97
 11-98
 11-302
 11-347
 11-357
 11-367
 11-368
 11-377
 11-500(AA-AC)
 29-118
 29-134
 29-136
 29-137
 11-303

NG: None.

USAR: None.

For explanation of abbreviations used, see AR 310-50.

RECOMMENDED CHANGES TO EQUIPMENT TECHNICAL MANUALS



SOMETHING WRONG WITH THIS MANUAL?

THEN... JOT DOWN THE DOPE ABOUT IT ON THIS FORM, TEAR IT OUT, FOLD IT AND DROP IT IN THE MAIL!

FROM: (YOUR UNIT'S COMPLETE ADDRESS)

Commander
Stateside Army Depot
ATTN: AMSTA-US
Stateside, N.J. 07703

DATE 10 July 1975

PUBLICATION NUMBER

TM 11-5840-340-12

DATE

23 Jan 74

TITLE

Radar Set AN/SPC-76

BE EXACT... PIN-POINT WHERE IT IS

IN THIS SPACE TELL WHAT IS WRONG AND WHAT SHOULD BE DONE ABOUT IT:

PAGE NO.	PARA-GRAPH	FIGURE NO.	TABLE NO.
----------	------------	------------	-----------

2-25	2-28		
3-10	3-3		3-1
5-6	5-8		

Recommend that the installation antenna alignment procedure be changed throughout to specify a 2° IFF antenna lag rather than 1°.

REASON: Experience has shown that with only a 1° lag, the antenna servo system is too sensitive to wind gusting in excess of 27 knots, and has a tendency to rapidly accelerate and decelerate as it hunts, causing strain to the drive train. Hunting is minimized by adjusting the lag to 2° without degradation of operation

Item 5, Function column. Change "2 db" to "3db."

REASON: The adjustment procedure for the TRANS POWER FAULT indicator calls for a 3 db (500 watts) adjustment to light the TRANS POWER FAULT indicator.

Add new step f.1 to read, "Replace cover plate removed in step e.1, above."

REASON: To replace the cover plate.

F03

Zone C 3. On J1-2, change "+24 VDC to "+5 VDC."

REASON: This is the output line of the 5 VDC power supply. + 24 VDC is the input voltage.

TYPED NAME, GRADE OR TITLE, AND TELEPHONE NUMBER

SSG I. M. DeSpirito 999-1776

SIGN HERE:

SSG I. M. DeSpirito

DA FORM 2028-2 (TEST)

P.S.--IF YOUR OUTFIT WANTS TO KNOW ABOUT YOUR MANUAL "FIND" MAKI A CARBON COPY OF THIS AND GIVE IT TO YOUR HEADQUARTERS.

HISA 1686-75

TEAR ALONG DOTTED LINE

RECOMMENDED CHANGES TO EQUIPMENT TECHNICAL MANUALS



SOMETHING WRONG WITH THIS MANUAL?

THEN... JOT DOWN THE DOPE ABOUT IT ON THIS FORM, TEAR IT OUT, FOLD IT AND DROP IT IN THE MAIL!

FROM: (YOUR UNIT'S COMPLETE ADDRESS)

DATE

PUBLICATION NUMBER

DATE

TITLE

BE EXACT... PIN-POINT WHERE IT IS

IN THIS SPACE TELL WHAT IS WRONG AND WHAT SHOULD BE DONE ABOUT IT:

PAGE NO.

PARA-GRAPH

FIGURE NO.

TABLE NO.

TEAR ALONG DOTTED LINE

TYPED NAME, GRADE OR TITLE, AND TELEPHONE NUMBER

SIGN HERE:

DA FORM 2028-2 (TEST)
1 AUG 74

P.S.--IF YOUR OUTFIT WANTS TO KNOW ABOUT YOUR MANUAL "FIND," MAKE A CARBON COPY OF THIS AND GIVE IT TO YOUR HEADQUARTERS.

FILL IN YOUR
UNIT'S ADDRESS

FOLD BACK

DEPARTMENT OF THE ARMY

POSTAGE AND FEES PAID
DEPARTMENT OF THE ARMY
DOD 314



OFFICIAL BUSINESS
PENALTY FOR PRIVATE USE \$300

Commander
US Army Electronics Command
ATTN: DRSEL-MA-Q
Fort Monmouth, New Jersey 07703

CUT ALONG DOTTED LINE

FOLD BACK

REVERSE OF DA FORM 2025-2 (TEST)



SOMETHING WRONG WITH THIS MANUAL?

THEN... JOT DOWN THE DOPE ABOUT IT ON THIS FORM, TEAR IT OUT, FOLD IT AND DROP IT IN THE MAIL!

FROM: (YOUR UNIT'S COMPLETE ADDRESS)

DATE

PUBLICATION NUMBER

DATE

TITLE

BE EXACT... PIN-POINT WHERE IT IS

IN THIS SPACE TELL WHAT IS WRONG AND WHAT SHOULD BE DONE ABOUT IT:

PAGE NO.

PARA-GRAPH

FIGURE NO.

TABLE NO.

TEAR ALONG DOTTED LINE

TYPED NAME, GRADE OR TITLE, AND TELEPHONE NUMBER

SIGN HERE:

FILL IN YOUR
UNIT'S ADDRESS

FOLD BACK

DEPARTMENT OF THE ARMY

POSTAGE AND FEES PAID
DEPARTMENT OF THE ARMY
DOD 314



OFFICIAL BUSINESS
PENALTY FOR PRIVATE USE \$300

Commander
US Army Electronics Command
ATTN: DRSEL-MA-Q
Fort Monmouth, New Jersey 07703

CUT ALONG DOTTED LINE

FOLD BACK

REVERSE OF DA FORM 2026-2 (TEST)

RECOMMENDED CHANGES TO EQUIPMENT TECHNICAL MANUALS

SOMETHING WRONG WITH THIS MANUAL



THEN . . . JOT DOWN THE DOPE ABOUT IT ON THIS FORM, TEAR IT OUT, FOLD IT AND DROP IT IN THE MAIL!

FROM: (YOUR UNIT'S COMPLETE ADDRESS)

DATE

PUBLICATION NUMBER

DATE

TITLE

BE EXACT . . . PIN-POINT WHERE IT IS

IN THIS SPACE TELL WHAT IS WRONG AND WHAT SHOULD BE DONE ABOUT IT:

PAGE NO.	PARAGRAPH	FIGURE NO.	TABLE NO.

TEAR ALONG DOTTED LINE

TYPED NAME, GRADE OR TITLE, AND TELEPHONE NUMBER

SIGN HERE:

DA FORM 2028-2 (TEST)

1 AUG 74

P.S.--IF YOUR OUTFIT WANTS TO KNOW ABOUT YOUR MANUAL "FIND," MAKE A CARBON COPY OF THIS AND GIVE IT TO YOUR HEADQUARTERS.

FILL IN YOUR
UNIT'S ADDRESS

FOLD BACK

DEPARTMENT OF THE ARMY

POSTAGE AND FEES PAID
DEPARTMENT OF THE ARMY
DOD 314



OFFICIAL BUSINESS
PENALTY FOR PRIVATE USE \$300

Commander
US Army Electronics Command
ATTN: DRSEL-MA-Q
Fort Monmouth, New Jersey 07703

CUT ALONG DOTTED LINE

FOLD BACK

REVERSE OF DA FORM 2026-2 (TEST)

**DEPARTMENT OF THE ARMY
US ARMY AG PUBLICATIONS CENTER
1655 WOODSON ROAD
ST. LOUIS, MISSOURI 63114**

**OFFICIAL BUSINESS
PENALTY FOR PRIVATE USE \$300**

**POSTAGE AND FEES PAID
DEPARTMENT OF THE ARMY
DOD 314**



END

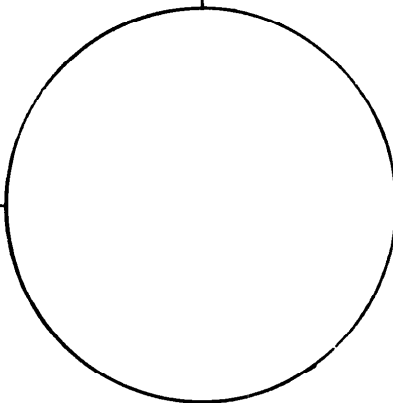
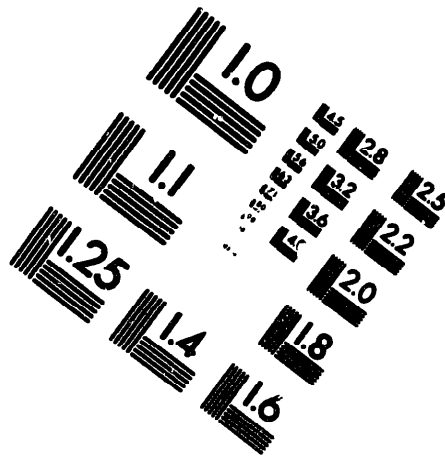
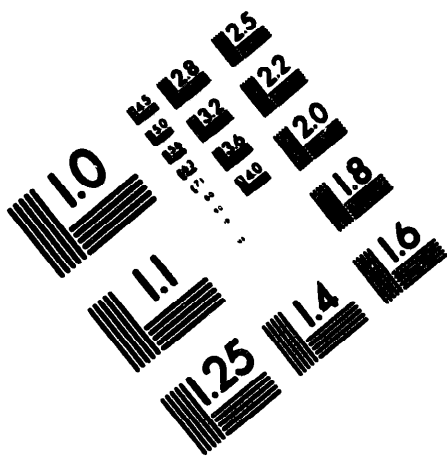
03-04-83

DATE





MICROFORM TEST TARGET



150 MM

1.0 mm (e= 0.1 mm)

ABCDEFGHIJKLMNQRSTUUVWXYZ1234567890
abcdefghijklmnopqrstuvwxyz\$%&/'%# 1/2 1/4 3/4 ---+ x&@*

1.5 mm (e= 1.09 mm)

ABCDEFGHIJKLMNQRSTUUVWXYZ1234567890
abcdefghijklmnopqrstuvwxyz\$%&/'%# 1/2 1/4 3/4 ---+ x&@*

2.0 mm (e= 1.37 mm)

ABCDEFGHIJKLMNQRSTUUVWXYZ
abcdefghijklmnopqrstuvwxyz
1234567890\$%&/'%# 1/2 1/4 3/4 ---+ x&@*

2.5 mm (e= 1.77 mm)

ABCDEFGHIJKLMNQRSTUUVWXYZ
abcdefghijklmnopqrstuvwxyz
1234567890\$%&/'%# 1/2 1/4 3/4 ---+ x&@*

1.0 mm (e= 0.1 mm)

ABCDEFGHIJKLMNQRSTUUVWXYZ1234567890
abcdefghijklmnopqrstuvwxyz\$%&/'%# 1/2 1/4 3/4 ---+ x&@*

1.5 mm (e= 1.09 mm)

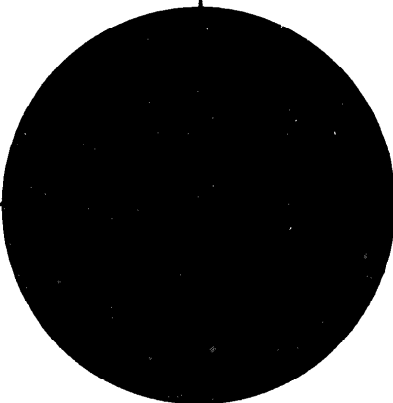
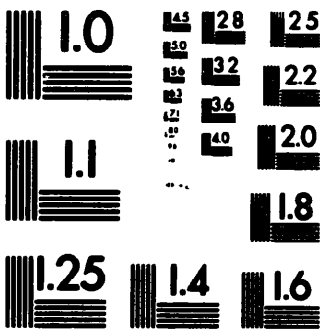
ABCDEFGHIJKLMNQRSTUUVWXYZ1234567890
abcdefghijklmnopqrstuvwxyz\$%&/'%# 1/2 1/4 3/4 ---+ x&@*

2.0 mm (e= 1.37 mm)

ABCDEFGHIJKLMNQRSTUUVWXYZ
abcdefghijklmnopqrstuvwxyz
1234567890\$%&/'%# 1/2 1/4 3/4 ---+ x&@*

2.5 mm (e= 1.77 mm)

ABCDEFGHIJKLMNQRSTUUVWXYZ
abcdefghijklmnopqrstuvwxyz
1234567890\$%&/'%# 1/2 1/4 3/4 ---+ x&@*



200 MM

250 MM

